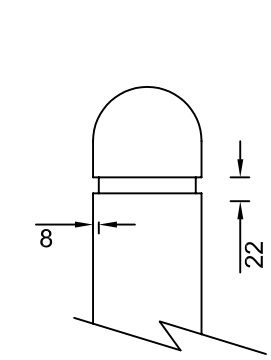


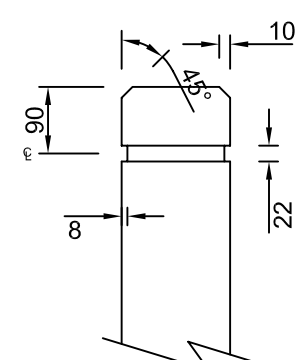
- Notes:**
1. All Bollards 150 / 200mm Diam Slash Pine H4 ACQ / CCA Perfect Rounds.
  2. All Bollards to receive 2 coats Intergrain Dimension 4 / Natural Stain as per manufacturers recommended installation instructions standard procedures.
  3. This design remains the property of Join-T-Lock. ABN No. 24 963 930 017.

**DRAFT - TO BE APPROVED  
BY CLIENT PRIOR TO  
FURTHER INVESTIGATIONS/  
COMMENCEMENT.**

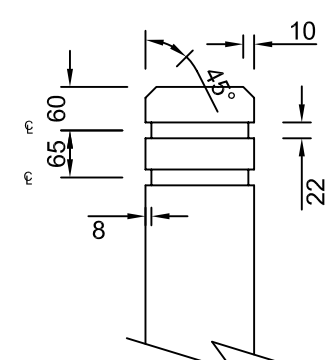
**CLIENT SIGNATURE**  
.....



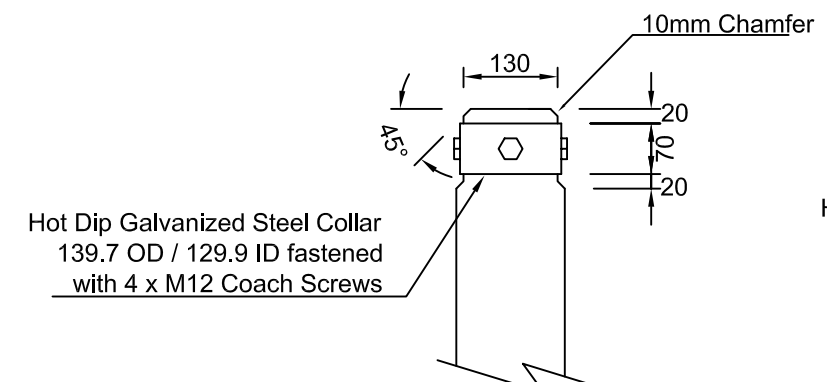
Model D+1G  
150



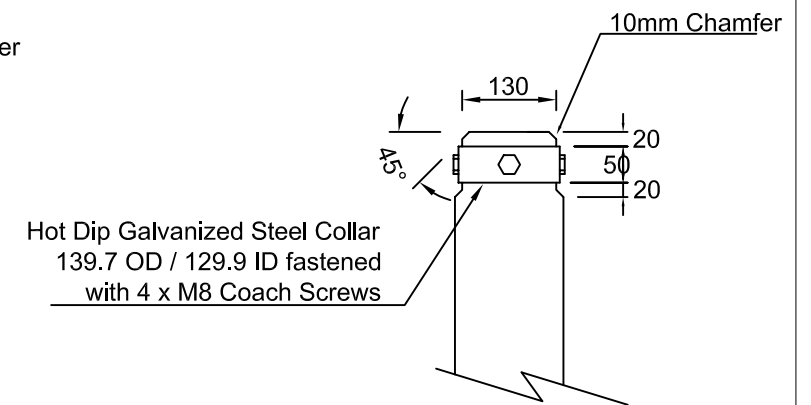
Model C+1G  
150



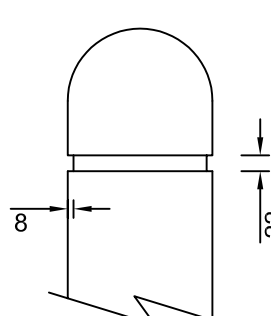
Model C+2G  
150



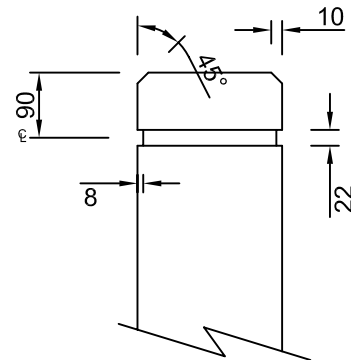
Model C + LC  
150



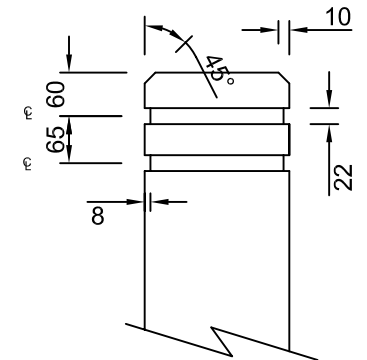
Model C + SC 150



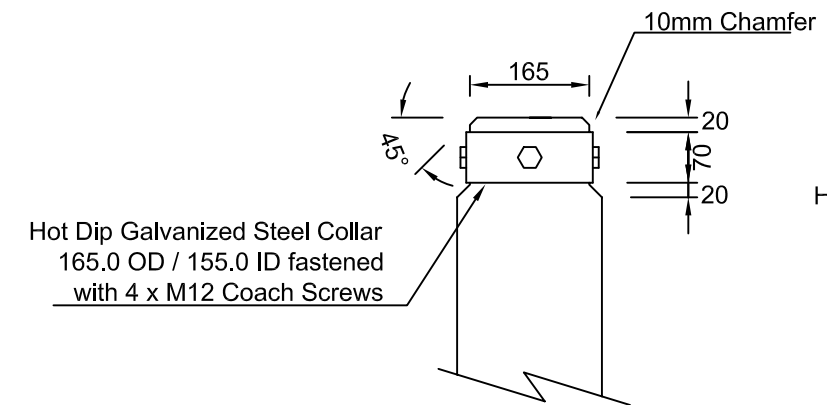
Model D+1G  
200



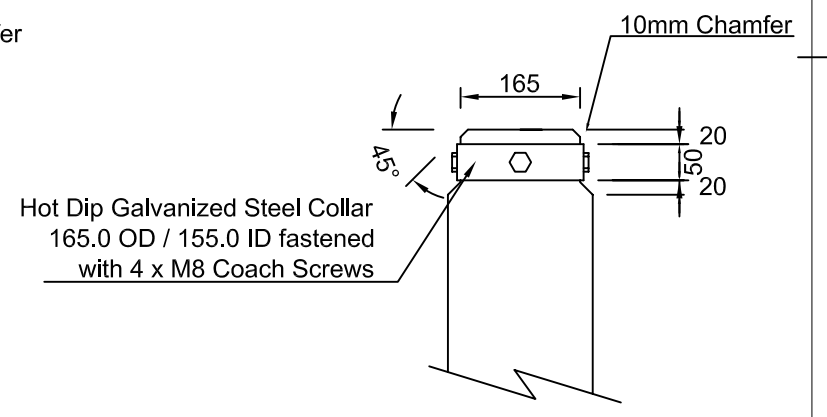
Model C+1G  
200



Model C+2G  
200



Model C + LC  
200



Model C + SC 200

REV	DRN	DATE	DESCRIPTION	CHK	APP
A	LT	28.01.04	SPECIFICATION		

CLIENT  
JOIN - T - LOCK  
LOT 5 EDNEY LANE  
CONISTON NSW 2500  
Ph:4256 4767 Fax:4256 4558

PRINCIPAL CONSULTANTS  
SPMA P/L  
SUITE 2, 11 FOREST ROAD  
HURSTVILLE NSW 2220  
PH: 9588 9222 FAX: 9588 9322



DRAWING NAME  
BOLLARD TOPS

CONTRACT No.  
04-116

DRAWING No.  
04-116-SD09

SHEET NO. **A**